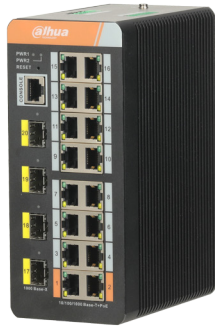


DH-PFS4420-16GT-DP

20-port Gigabit Industrial Switch with 16-port PoE (Managed)



- Layer 2 managed industrial PoE switch
- Support IEEE802.3af, IEEE802.3at and Hi-PoE (60W) standard
- Support STP, RSTP and MSTP
- Support ERPS
- Support L2 features, including VLAN, link aggregation, IGMP Snooping, LLDP ACL, QoS etc.
- Support Web, SNMP and CLI management
- IP40 full metal enclosure, fully-sealed and dustproof design
- Dual power input for power redundancy
- Wide operating temperature: -40°C to +75°C

System Overview

DH-PFS4420-16GT-DP is a layer 2 managed industrial PoE switch, with 16 Gigabit PoE ports. The switch supports IEEE802.3af and IEEE802.3at. Moreover, port 1 and port 2 (orange port) support Hi-PoE, which provides maximum 60W with single port.

This switch supports web, Simple Network Management Protocol (SNMP) and Command-line Interface (CLI). Also, it supports standard spanning tree protocols STP, RSTP, MSTP and ERPS, and provides rich features such as VLAN, link aggregation, port mirroring, flow control, IGMP Snooping, SNMP, ACL and QoS. It can be mounted on rails, supports dual power input for power redundancy and wide operating temperature ranging from -40°C to +75°C. This switch provides high EFT and ESD protection for industrial networking applications, such as outdoor security surveillance, ITS, energy, factory and other outdoor or harsh environment.

Packet Forwarding Rate	28.28 Mpps
Packet Buffer Memory	4 Mbits
MAC Address Table	8K
Operating Humidity	5%RH–95%RH
Operating Temperature	-40°C to +75°C (-40°F to +167°F)
Power Supply	DC 48V-57V (power adapter is not provided)
Lightning Protection	Common mode: 6 kV Differential mode: 4 kV
Power Consumption	Idling power consumption: 15W PoE full load power consumption: 240W
Net Weight	1.35 kg (2.98 lb)
Gross Weight	1.38 kg (3.04 lb)
Dimensions	134.15 mm × 175 mm × 75 mm

Technical Specification

Ethernet Port	Port 1-16: 16 × 10/100/1000 Base-T (PoE)
SFP Port	Port 17-20: 4 × 1000 Base-X
RS-232 Serial Port	1 × RS-232 (Baud rate 115200)
RS-485 Port	2 × RS-485 (Baud rate 9600, TCP and UDP)
PoE Power	Each port ≤ 30W, total ≤ 240W Port 1 and port 2 support Hi-PoE (60W)
PoE Protocol	IEEE802.3af; IEEE802.3at; Hi-PoE
PoE Budget	≤240W
PoE PIN Assignment	PoE: 1, 2, 4, 5 (V+), 3, 6, 7, 8 (V-) Hi-PoE: 1, 2, 4, 5 (V+), 3, 6, 7, 8 (V-)
Switch Capacity	54 Gbps

Accessories (to be purchased separately)

SFP Module

PFT3950	1.25G 850nm, 500m, LC, multi-mode
PFT3960	1.25G 1310/1550nm, 20km, LC, single-mode
PFT3970	1.25G 1550/1310nm, 20km, LC, single-mode

DIN-Rail Power Supply

EDP-240-48	240W, 100VAC–240VAC, 48V5A
------------	----------------------------

Service Characteristics

System	(Default) username: admin, password: admin IP address: 192.168.1.110
NTP Client	Support
DHCP	Support DHCP-Client
VLAN	802.1Q
Flow Control	Support flow control based on IEEE802.3X
Link Aggregation	Static manual aggregation, static LACP
Port Mirroring	Support one-to-one and many-to-one port mirroring
Multicast	Support IGMP Snooping v1/v2/v3
Quality of Service (QoS)	Support strict priority (SP), WRR Support IEEE802.1P and DSCP
Ring Network	Support STP, RSTP, MSTP and ERPS
Security	IEEE802.1x, MAC binding based on port
System Maintenance	Restore factory defaults with one button, upload the upgrade package, upload and download configuration file, and support system log
Device Management	Web, CLI, SSH, SNMP v1/v2c/v3

Dimensions (mm)

